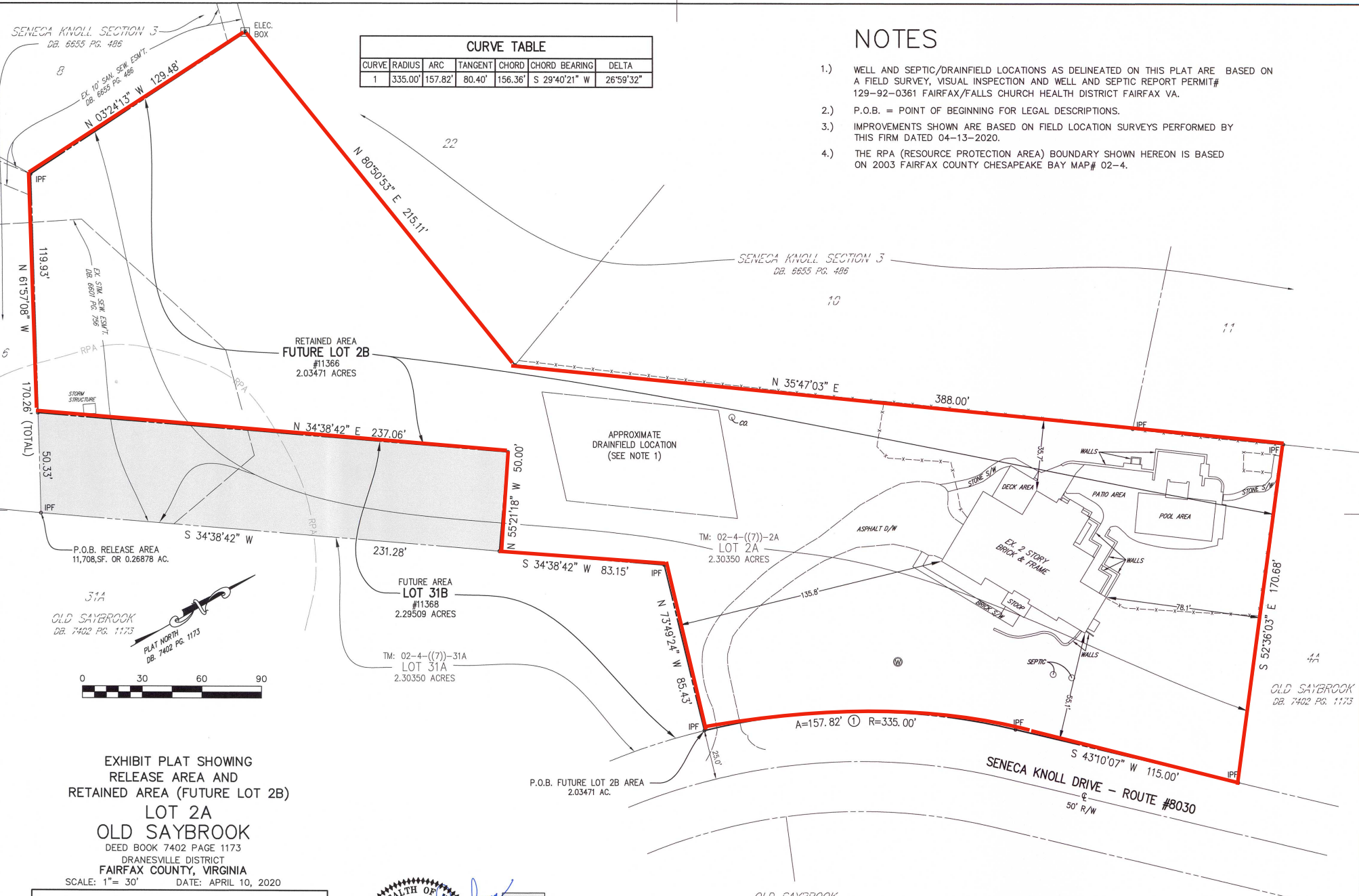


SENECA KNOLL SECTION 3
DB. 6555 PG. 485

CURVE	RADIUS	ARC	TANGENT	CHORD	CHORD BEARING	DELTA
1	335.00'	157.82'	80.40'	156.36'	S 29°40'21" W	26°59'32"

NOTES

- 1.) WELL AND SEPTIC/DRAINFIELD LOCATIONS AS DELINEATED ON THIS PLAT ARE BASED ON A FIELD SURVEY, VISUAL INSPECTION AND WELL AND SEPTIC REPORT PERMIT# 129-92-0361 FAIRFAX/FALLS CHURCH HEALTH DISTRICT FAIRFAX VA.
- 2.) P.O.B. = POINT OF BEGINNING FOR LEGAL DESCRIPTIONS.
- 3.) IMPROVEMENTS SHOWN ARE BASED ON FIELD LOCATION SURVEYS PERFORMED BY THIS FIRM DATED 04-13-2020.
- 4.) THE RPA (RESOURCE PROTECTION AREA) BOUNDARY SHOWN HEREON IS BASED ON 2003 FAIRFAX COUNTY CHESAPEAKE BAY MAP# 02-4.



RETAINED AREA
FUTURE LOT 2B
#11366
2.03471 ACRES

APPROXIMATE
DRAINFIELD LOCATION
(SEE NOTE 1)

TM: 02-4-((7))-2A
LOT 2A
2.30350 ACRES

FUTURE AREA
LOT 31B
#11368
2.29509 ACRES

TM: 02-4-((7))-31A
LOT 31A
2.30350 ACRES

P.O.B. FUTURE LOT 2B AREA
2.03471 AC.

SENECA KNOLL DRIVE - ROUTE #8030
50' R/W

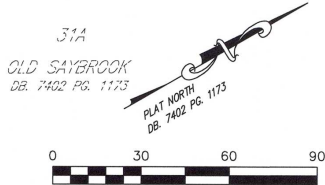
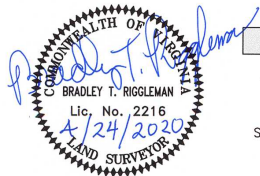


EXHIBIT PLAT SHOWING
RELEASE AREA AND
RETAINED AREA (FUTURE LOT 2B)
LOT 2A
OLD SAYBROOK
DEED BOOK 7402 PAGE 1173
DRANESVILLE DISTRICT
FAIRFAX COUNTY, VIRGINIA
SCALE: 1"= 30' DATE: APRIL 10, 2020

BC Consultants
Planners · Engineers · Surveyors · Landscape Architects
12600 Fair Lakes Circle, Suite 100, Fairfax, VA 22033
(703) 449-8100 (703) 449-8108 (Fax)
www.bcconsultants.com



- DENOTES AREA TO BE RELEASED
- - - = FENCE
- IPF = IRON PIPE FOUND
- RPA = 2003 RESOURCE PROTECTION AREA (SEE NOTE 4)
- SEPTIC = SEPTIC PUMP CHAMBER MANHOLES
- ⊙ = WELL