

621 SPRINGVALE ROAD

GREAT FALLS, VA 22066



Rendering by Floor Plan Visuals.
All measurements are approximate. While deemed reliable, no information on these floor plans should be relied upon without independent verification.

Presented by Michelle Pappas, Berkshire Hathaway HomeServices PenFed Realty
Tel: 703.622.2282
Email: team@maryandmichelle.com

**Estimated Total Finished
Square Footage: 6,685 SQ FT**

Above-Grade: 5,840 SQ FT Below-Grade: 845 SQ FT
Plus 510 SQ FT 2-Car Garage on Main Level
Plus 435 SQ FT Mech Room/Storage on Lower Level
Calculated per ANSI Standard Z765-2003.

621 SPRINGVALE ROAD

GREAT FALLS, VA 22066

* Estimated Total Finished & Unfinished Square Footage: 7,630 SQ FT



MAIN LEVEL
3,540 SQ FT



Rendering by Floor Plan Visuals.
All measurements are approximate. While deemed reliable, no information on these floor plans should be relied upon without independent verification.

Presented by Michelle Pappas, Berkshire Hathaway HomeServices PenFed Realty
Tel: 703.622.2282
Email: team@maryandmichelle.com

621 SPRINGVALE ROAD

GREAT FALLS, VA 22066

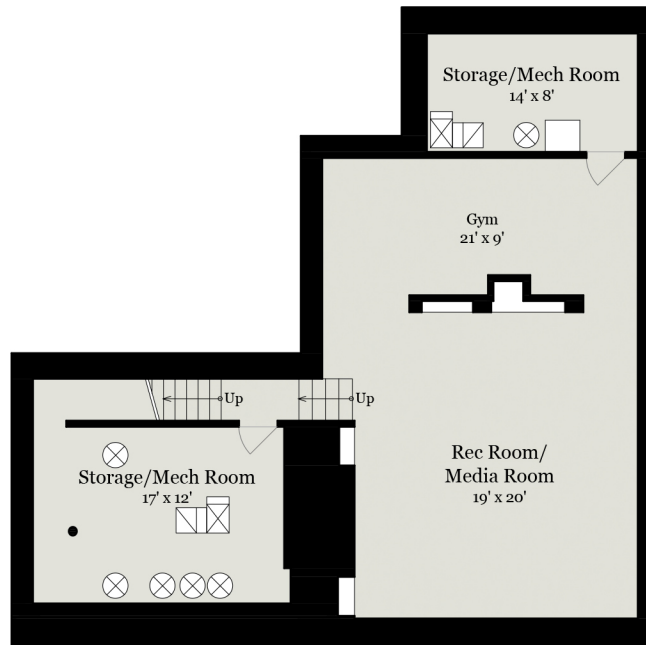


Rendering by Floor Plan Visuals.
All measurements are approximate. While deemed reliable, no information on these floor plans should be relied upon without independent verification.

Presented by Michelle Pappas, Berkshire Hathaway HomeServices PenFed Realty
Tel: 703.622.2282
Email: team@maryandmichelle.com

621 SPRINGVALE ROAD

GREAT FALLS, VA 22066



LOWER LEVEL

845 SQ FT - Finished
435 SQ FT - Unfinished

